

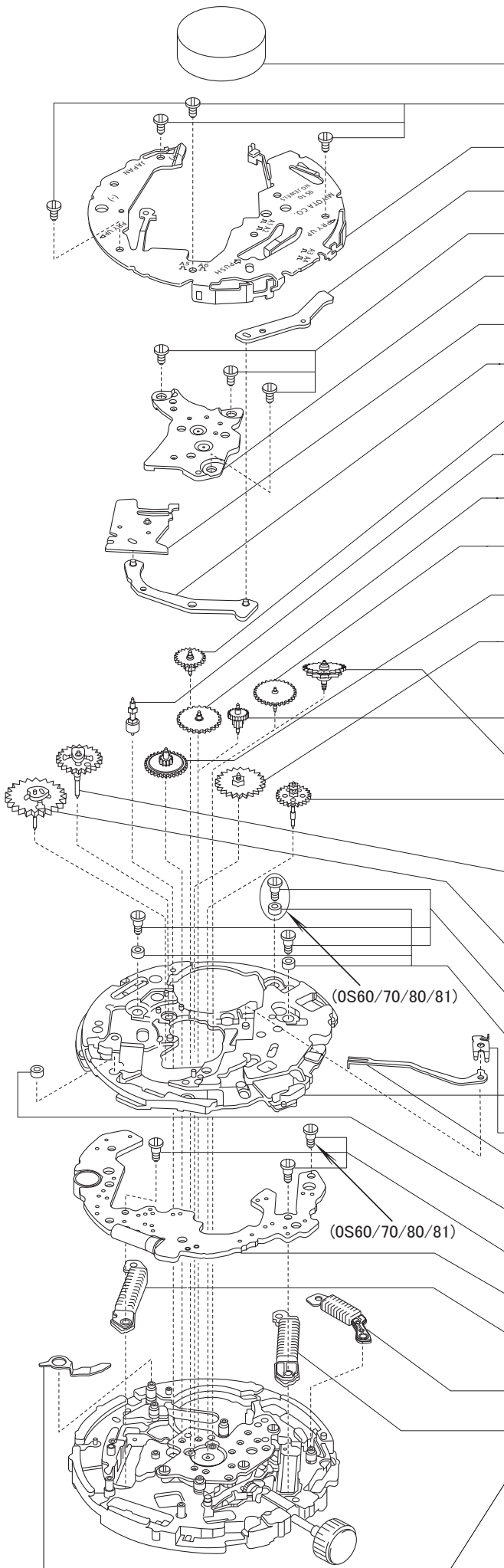
***** CAL. 0S SERIES MOV'T PARTS LIST *****

ORIGINAL PARTS, MADE IN JAPAN

<u>PART NAME</u>	<u>0S10/0S11</u>	<u>0S20</u>	<u>0S30</u>	<u>0S60</u>	<u>0S70</u>	<u>0S80</u>
ALARM MARKING WHEEL						189-070
ALARM MARKING WHEEL GUARD						117-280
BATTERY	280-4404	280-4404	280-4404	280-4404	280-4404	280-4404
BATTERY CONNECTOR SPRING	231-345	231-345	231-345	231-345	231-345	231-371
BUZZER CONTACT SPRING						903-201
BUZZER TERMINAL PLATE						184-154
CALENDAR CORRECTOR LEVER	116-106	116-115	116-106	116-106	116-106	116-115
CALENDAR CORRECTOR WHEEL	213-380	213-440	213-380	213-380	213-380	
CANNON PINION WITH DRIVING WHEEL	028-218	028-295	028-218	028-218	028-218	028-295
CENTER WHEEL COCK	711-163	711-163	711-163	711-167	711-167	711-167
CHRONOGRAPH COIL UNIT 1	246-148	246-148	246-148	246-148	246-148	246-148
CHRONOGRAPH COIL UNIT 2	----	----	----	246-178	246-178	246-178
CHRONOGRAPH WHEEL	----	----	----	251-090	251-090	251-190
CIRCUIT INSULATOR						233-482
CLUTCH WHEEL	064-670	064-670	064-670	064-670	064-670	064-670
COIL UNIT	246-147	246-147	246-147	246-147	246-147	246-147
CONTACT SPRING						258-390
DATE DIAL	108-A0XX	108-A0XX	108-A0XX	108-A0XX	108-A0XX	108-A001
DATE DIAL DRIVING WHEEL	103-105	103-105	----	103-105	----	103-116
DATE DIAL GUARD (1)	293-990	293-119	----	293-990	----	293-111
DATE DIAL GUARD (2)	713-107	713-138	----	713-107	----	
DATE JUMPER	109-580	109-580	----	109-580	----	109-580
ELECTRIC CIRCUIT UNIT	279-B70	279-B70	279-B70	279-B70	279-B70	
ELECTRIC CIRCUIT UNIT						279-B68
FIFTH WHEEL AND PINION	084-640	084-640	084-640	084-640	084-640	084-640
FLY-BACK CONNECTION LEVER	270-060	270-060	270-060	270-060	270-060	270-060
FLY-BACK LEVER	260-116	260-116	260-116	260-116	260-116	260-116
FORTH WHEEL AND PINION	023-267	023-267	023-267	023-267	023-267	023-267
HOUR RECORDING WHEEL	294-710	----	294-710	294-710	294-710	294-760
HOUR WHEEL	075-392	075-523	075-392	075-392	075-392	075-477
INTERMEDIATE CHRONOGRAPH WHEEL	----	----	----	087-141	087-141	087-141
INTERMEDIATE DATE WHEEL 1						100-590
INTERMEDIATE DATE WHEEL 2						100-600
INTERMEDIATE DATE CORRECTING WHEEL	087-620	087-620	087-620	087-620	087-620	087-620
INTERMEDIATE DATE CORRECTING WHEEL(1)	----	087-217	----	----	----	
INTERMEDIATE DATE CORRECTING WHEEL(2)(3)	----	087-218	----	----	----	
INTERMEDIATE DATE CORRECTING WHEEL(4)	----	087-219	----	----	----	
INTERMEDIATE HOUR-RECORDING WHEEL 1	087-135	----	087-135	087-135	087-135	087-135
INTERMEDIATE HOUR-RECORDING WHEEL 2	087-136	----	087-136	087-136	087-136	087-136
INTERMEDIATE HOUR-RECORDING WHEEL 3	087-137	----	087-137	087-137	087-137	087-137
INTERMEDIATE MINUTE WHEEL	087-138	087-138	087-138	087-138	087-138	087-138
INTERMEDIATE MINUTE-RECORDING WHEEL	087-134	087-135	087-134	087-134	087-134	087-134
INTERMEDIATE SECOND-RECORDING WHEEL	087-221	087-221	087-221	087-221	087-221	087-133
INTERMEDIATE UNLOCKING CORR. WHEEL						213-450
MINUTE RECORDING WHEEL	291-060	291-090	291-060	291-060	291-060	291-700
MINUTE WHEEL AND PINION	072-114	072-114	072-114	072-114	072-114	072-114
ROCKING BAR						165-410
ROTOR	285-223	285-223	285-223	285-223	285-223	285-223
ROTOR FOR SECOND CHRONOGRAPH	285-224	285-224	285-224	285-224	285-224	285-148
ROTOR FOR CHRONOGRAPH	----	----	----	285-151	285-151	285-151
SCREW FOR CENTER WHEEL COCK (X3)	923-980	923-980	923-980	923-980	923-980	923-980
SCREW FOR CHRONOGRAPH COIL UNIT 1	923-990	923-990	923-990	923-990	923-990	923-990
SCREW FOR CHRONOGRAPH COIL UNIT 2(X2)	----	----	----	923-990	923-990	923-990
SCREW FOR CHRONOGRAPH GURD(X4)	923-980	923-980	923-980	923-980	923-980	923-980
SCREW FOR COIL UNIT	923-990	923-990	923-990	923-990	923-990	923-990
SCREW FOR DATE DIAL GUARD (X3)	929-480	923-540	----	929-480	----	929-630
SCREW FOR ELECTRIC CIRCUIT (X2)	923-990	923-990	923-990	923-990	923-990	923-990
SCREW FOR TRAIN WHEEL BRIDGE (X3)	923-980	923-980	923-980	923-980	923-980	923-980
SECOND CHRONOGRAPH WHEEL	251-080	251-180	251-080	251-080	251-080	251-180
SECOND WHEEL	025-950	025-114	025-950	----	----	
SETTING LEVER	067-162	067-162	067-163	067-162	067-163	067-162

SETTING STEM	065-453	065-453	065-453	065-453	065-453	065-453
SETTING WHEEL	076-680	076-680	076-680	076-680	076-680	076-680
SPACER FOR ELECTRIC CIRCUIT 1 (X2)	027-111	027-111	027-111	----	----	
SPACER FOR ELECTRIC CIRCUIT 1 (X3)	----	----	----	027-111	027-111	027-111
SPACER FOR ELECTRIC CIRCUIT 2	027-112	027-112	027-112	027-112	027-112	027-112
SPACER FOR SETTING STEM	212-208	212-208	212-208	212-208	212-208	212-256
STATOR	190-126	190-126	190-126	190-126	190-126	190-126
STATOR FOR CHRONOGRAPH 1	190-128	190-128	190-128	190-128	190-128	190-128
STATOR FOR CHRONOGRAPH 2	----	----	----	190-131	190-131	190-131
STOP LEVER	204-530	204-530	204-530	204-530	204-530	204-530
SUPPORTER FOR PLATE COMPLETE	226-497	226-497	226-497	226-497	226-497	226-459
SUPPORTOR FOR CHRONOGRAPH PLATE	720-203	720-526	720-204	720-209	720-228	720-448
SWITCH LEVER ACTUATING SPRING						282-920
SWITCH SPRING FOR ALARM						227-580
SWITCH STEM FOR ALARM						065-513
24 HOUR DRIVING WHEEL		100-670				
THIRD WHEEL AND PINION	017-142	017-142	017-142	017-142	017-142	017-142
TRAIN WHEEL BRIDGE	701-E92	701-E92	701-E92	701-E92	701-E92	701-875
UNLOCKING CORRECTING WHEEL						213-450
UNLOCKING LEAD PLATE						184-155
UNLOCKING WHEEL						169-070
YOKE	071-128	071-128	071-128	071-128	071-128	071-128
LONGER SETTING STEM(24.00MM)	065-533	065-533	065-533	065-533	065-533	

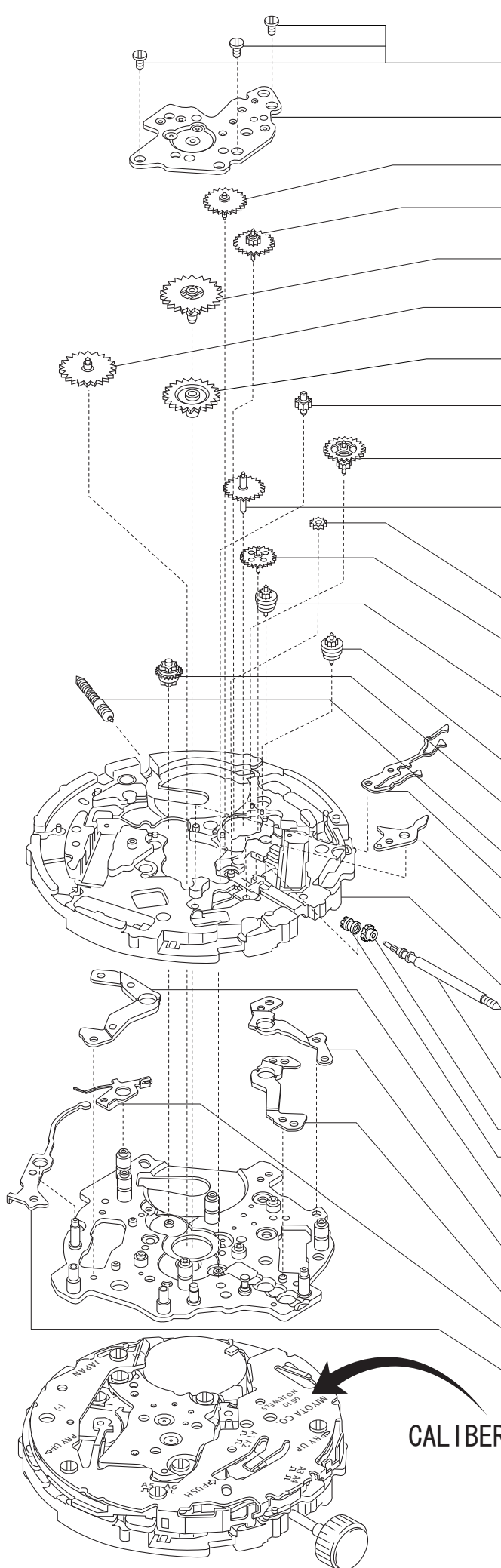
CAL.OS SERIES




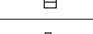








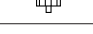



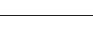


	OS10/11	OS20	OS30	OS60/70	OS80	PARTS NAME
	280-440	←	←	←	←	BATTERY
	923-980 (× 4)	←	←	←	←	SCREW FOR CHRONO GRAPH GURD (× 4)
	720-203 (OS10) -623 (OS11)	-526	-204	-209 (OS60) -228 (OS70)	-448 (OS80) -450 (OS81)	SUPPORTER FOR CHRONOGRAPH PLATE
	260-116	←	←	←	←	FLY-BACK LEVER
	923-980 (× 3)	←	←	←	←	SCREW FOR CENTER WHEEL COCK (× 3)
	701-E92	←	←	←	-875	TRAIN WHEEL BRIDGE
	270-060	←	←	←	←	FLY-BACK CONNECTION LEVER
	204-530	←	←	←	←	STOP LEVER
	087-221	←	←	←	←	INTERMEDIATE SECOND -RECORDING WHEEL
	285-224	←	←	←	←	ROTOR FOR CHRONOGRAPH 1
	087-136 OS11	←	-136	←	←	INTERMEDIATE HOUR- RECORDING WHEEL 2
	087-137 OS11	←	-137	←	←	INTERMEDIATE HOUR- RECORDING WHEEL 3
	087-135 OS11	←	-135	←	←	INTERMEDIATE HOUR- RECORDING WHEEL 1
	087-134	←	-134	←	←	INTERMEDIATE MINUTE -RECORDING WHEEL
		087-135	←	←	←	INTERMEDIATE MINUTE -RECORDING WHEEL (1)
		087-214	←	←	←	INTERMEDIATE MINUTE -RECORDING WHEEL (2)
		087-215	←	←	←	INTERMEDIATE MINUTE -RECORDING WHEEL (3)
	251-080	-180	-080	←	-180	SECOND CHRONOGRAPH WHEEL
	294-710 OS11	←	-710	←	-760	HOUR RECORDING WHEEL
	291-060	-090	-060	←	-070	MINUTE RECORDING WHEEL
	923-990 (× 2)	←	←	← (× 3)	←	SCREW FOR COIL UNIT (CHRONOGRAPH COIL UNIT) 1,2
	027-111 (× 2)	←	←	← (× 3)	←	SPACER FOR ELECTRIC CIRCUIT 1
	226-497	←	←	←	-459	SUPPORER FOR PLATE COMPLETE
					903-201	BUZZER CONTACT SPRING
					184-154	BUZZER TERMINAL PLATE
	027-112	←	←	←	←	SPACER FOR ELECTRIC CIRCUIT 2
	923-990 (× 2)	←	←	← (× 3)	←	SCREW FOR ELECTRIC CIRCUIT
	279-B70	←	←	←	-B68	ELECTRIC CIRCUIT UNIT
	246-148	←	←	←	←	CHRONOGRAPH COIL UNIT 1
				246-178	←	CHRONOGRAPH COIL UNIT 2
	246-147	←	←	←	←	COIL UNIT
	231-345	←	←	←	-371	BATTERY CONNECTOR SPRING

※ Depending on the cal,the parts might slightly differ from the drawing

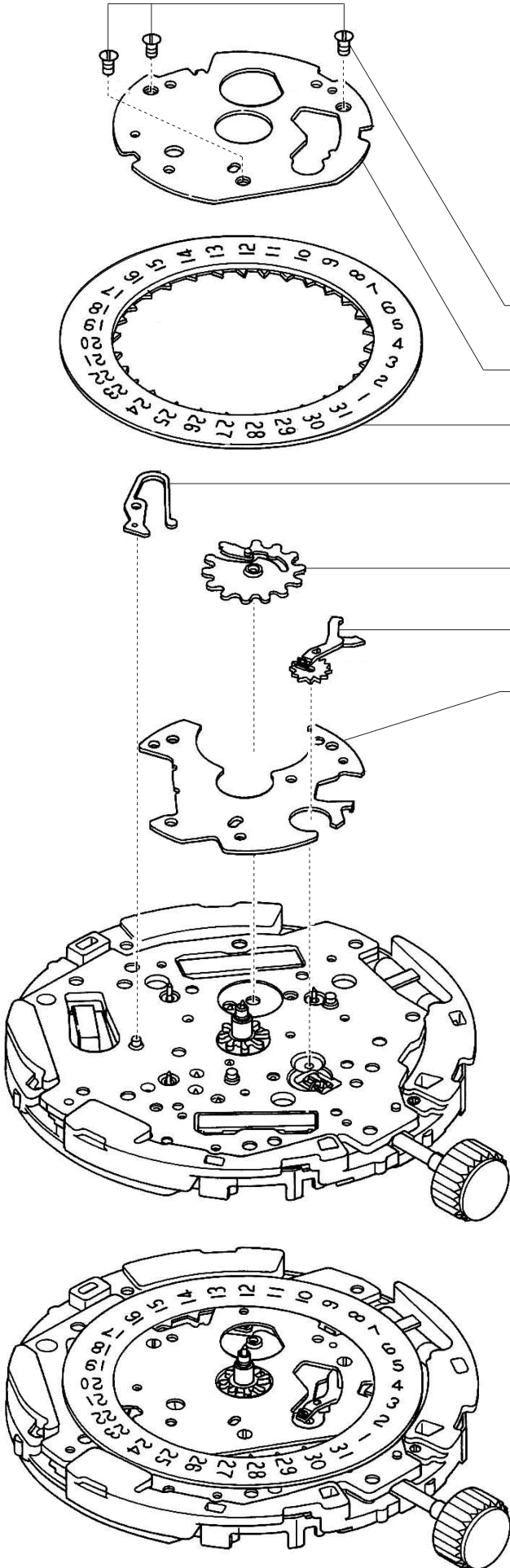
CAL.0S SERIES



	OS10/11	OS20	OS30	OS60/70	OS80	PARTS NAME
	923-980	←	←	←	←	SCREW FOR CENTER WHEEL COCK (× 3)
	711-163 (OS10) -166 (OS11)	-163	←	-167	←	CENTER WHEEL COCK
	017-142 	←	←	←	←	3RD WHEEL
	023-267 	←	←	←	←	4TH WHEEL
	028-218 	-295	-218	←	-295	CANNON PINION WITH DRIVING WHEEL
	072-114 	←	←	←	←	MINUTE WHEEL AND PINION
	075-392 	-523	-392	←	-447	HOUR WHEEL
	087-138 	←	←	←	←	INTERMEDIATE MINUTE WHEEL
	— 	←	←	087-141	←	INTERMEDIATE CHRONO GRAPH WHEEL
	025-950 	-114	-950	←	←	SECOND WHEEL
	— 	←	←	251-090	-190	CHRONOGRAPH WHEEL
	076-680 	←	←	←	←	SETTING WHEEL
	084-640 	←	←	←	←	5TH WHEEL
	285-223 	←	←	←	←	ROTOR
	— 	←	←	285-151	←	CHRONOGRAPH ROTOR
	— 	←	←	←	100-590	INTERMEDIATE DATE WHEEL (1)
	— 	←	←	←	065-513	SWITCH STEM (ALARM SWITCH STEM)
	071-128	←	←	←	←	YOKE
	067-162	←	-163	-162 (OS60) -163 (OS70)	-162	SETTING LEVER
	212-208	←	←	←	-256	SPACER FOR SETTING STEM
	065-441 -453 -533	←	←	←	←	SETTING STEM
	087-620 	←	←	←	←	INTERMEDIATE DATE CORRECTING WHEEL
	064-670 	←	←	←	←	CLUTCH WHEEL
	190-128	←	←	←	←	SECOND CHRONO GRAPH STATOR
	—	←	←	190-131	←	CHRONOGRAPH STATOR
	190-126	←	←	←	←	STATOR
	—	←	←	←	227-580	SWITCH SPRING (ALARM SWITCH SPRING)
	—	←	←	←	282-920	SWITCH LEVER ACTUATING SPRING

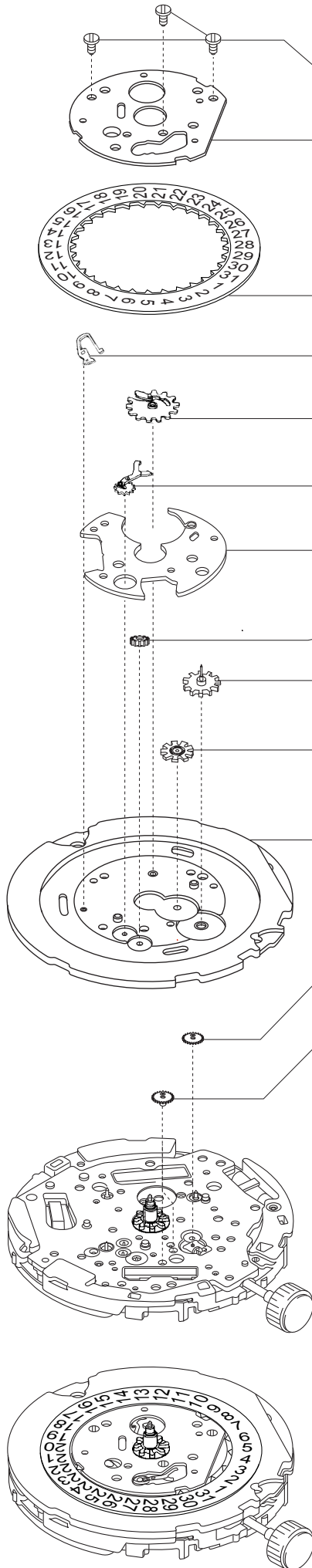
CALIBER NO. ※ Depending on the cal,the parts might slightly differ from the drawing

CAL.OS10/11/30/60/70



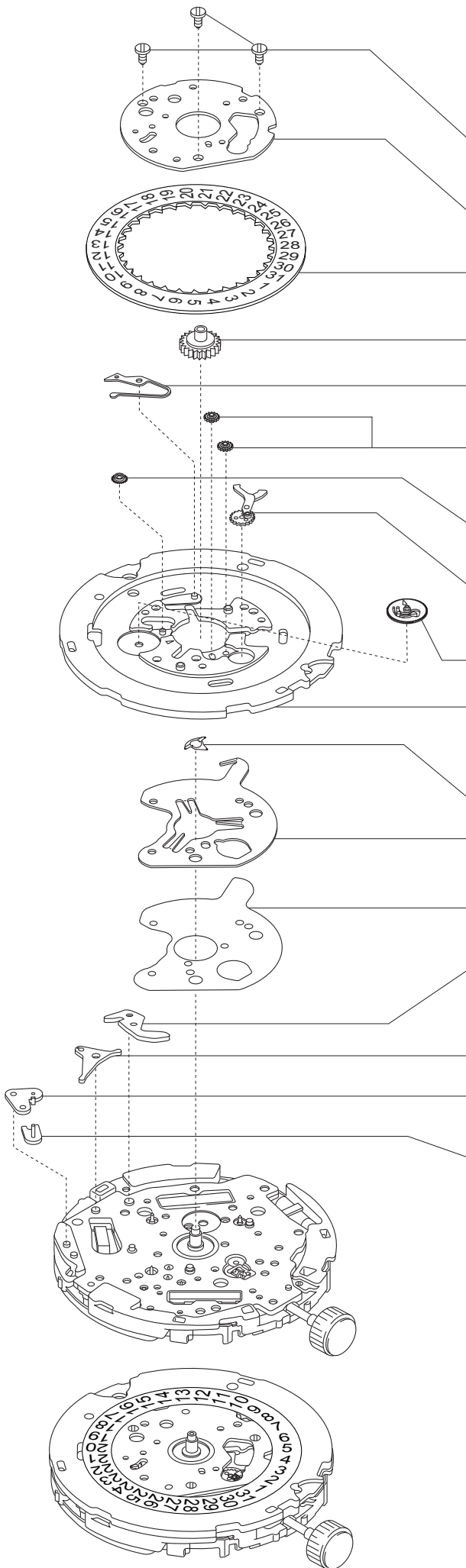
OS10/11	OS30	OS60	OS70	PARTS NAME
929-480	—	-480	—	SCREW FOR DATE DIAL GUARD (× 3)
293-990	—	-990	—	DATE DIAL GUARD (1)
108-A0X	—	-A0X	—	DATE DIAL
109-580	—	-580	—	DATE JUMPER
103-105	—	-105	—	DATE DIAL DRIVING WHEEL
116-106	—	-106	—	CALENDAR CORRECTOR LEVER
713-107	—	-107	—	DATE DIAL GUARD (2)


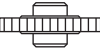


CAL.0S20



0S20	PARTS NAME
929-640	SCREW FOR DATE DIAL GUARD (× 3)
293-119	DATE DIAL GUARD (1)
108-A0X	DATE DIAL
109-580	DATE JUMPER
103-105	DATE DIAL DRIVING WHEEL
116-115	CALENDAR CORRECTOR LEVER
713-138	DATE DIAL GUARD (2)
087-219	INTERMEDIATE DATE CORRECTING WHEEL (4)
100-670	FLY-BACK WHEEL
087-216	INTERMEDIATE FLY-BACK WHEEL
714-038	CALENDAR PLATE
087-217	INTERMEDIATE DATE CORRECTING WHEEL (1)
087-218	INTERMEDIATE DATE CORRECTING WHEEL (2) (3)

CAL.0S80/81



0S80	0S81	PARTS NAME
929-630	←	SCREW FOR DATE DIAL GUARD (× 3)
293-111	←	DATE DIAL GUARD (1)
108-A0X	←	DATE DIAL
169-070	 ←	UNLOCKING WHEEL
109-580	←	DATE JUMPER
213-450	 ←	INTERMEDIATE UNLOCKING CORRECTING WHEEL
100-600	 ←	INTERMEDIATE DATE WHEEL 2
116-115	←	CALENDAR CORRECTOR LEVER
103-116	 ←	DATE DIAL DRIVING WHEEL
714-036	←	CALENDAR PLATE
258-390	←	CONTACT SPRING
184-155	←	UNLOCKING LEAD PLATE
233-482	←	CIRCUIT INSULATOR
—	195-010	ALARM MARKING PLATE
165-410	←	ROCKING BAR
117-280	←	ALARM MARKING WHEEL GUARD
189-070	←	ALARM MARKING WHEEL